



TFIIIC110 Polyclonal Antibody

Catalog No	YP-Ab-02111
Isotype	IgG
Reactivity	Human;Rat;Mouse;
Applications	WB;IHC;IF;ELISA
Gene Name	GTF3C2
Protein Name	General transcription factor 3C polypeptide 2
Immunogen	The antiserum was produced against synthesized peptide derived from human TF3C2. AA range:71-120
Specificity	TFIIIC110 Polyclonal Antibody detects endogenous levels of TFIIIC110 protein.
Formulation	Liquid in PBS containing 50% glycerol, 0.5% BSA and 0.02% sodium azide.
Source	Polyclonal, Rabbit,IgG
Purification	The antibody was affinity-purified from rabbit antiserum by affinity-chromatography using epitope-specific immunogen.
Dilution	WB: 1/500 - 1/2000. IHC: 1/100 - 1/300. ELISA: 1/20000.. IF 1:50-200
Concentration	1 mg/ml
Purity	≥90%
Storage Stability	-20°C/1 year
Synonyms	GTF3C2; KIAA0011; General transcription factor 3C polypeptide 2; TF3C-beta; Transcription factor IIIC 110 kDa subunit; TFIIIC 110 kDa subunit; TFIIIC110; Transcription factor IIIC subunit beta
Observed Band	100kD
Cell Pathway	Nucleus.
Tissue Specificity	Bone marrow,Brain,Colon,Epithelium,
Function	function:Required for RNA polymerase III-mediated transcription. Component of TFIIIC that initiates transcription complex assembly on tRNA and is required for transcription of 5S rRNA and other stable nuclear and cytoplasmic RNAs. May play a direct role in stabilizing interactions of TFIIIC2 with TFIIIC1.,similarity:Contains 4 WD repeats.,subunit:Part of the TFIIIC subcomplex TFIIIC2, consisting of six subunits, GTF3C1, GTF3C2, GTF3C3, GTF3C4, GTF3C5 and GTF3C6.,
Background	function:Required for RNA polymerase III-mediated transcription. Component of TFIIIC that initiates transcription complex assembly on tRNA and is required for transcription of 5S rRNA and other stable nuclear and cytoplasmic RNAs. May play a direct role in stabilizing interactions of TFIIIC2 with TFIIIC1.,similarity:Contains 4 WD repeats.,subunit:Part of the TFIIIC subcomplex



TFIIIC2, consisting of six subunits, GTF3C1, GTF3C2, GTF3C3, GTF3C4, GTF3C5 and GTF3C6.,

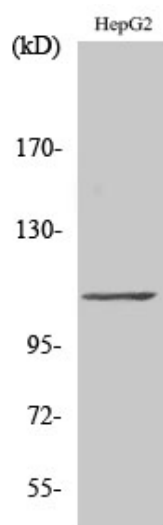
matters needing attention

Avoid repeated freezing and thawing!

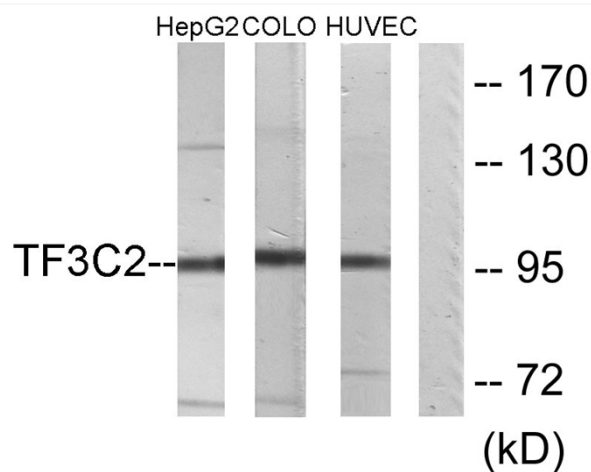
Usage suggestions

This product can be used in immunological reaction related experiments. For more information, please consult technical personnel.

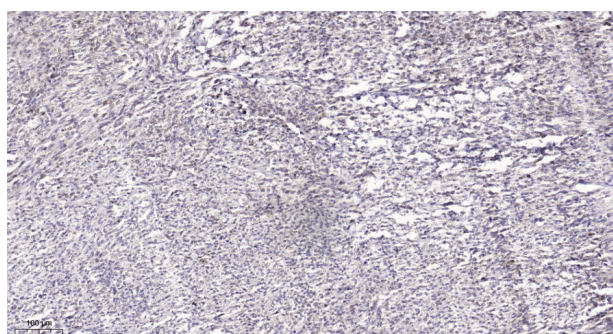
Products Images



Western Blot analysis of various cells using TFIIIC110 Polyclonal Antibody



Western blot analysis of lysates from HepG2, COLO205, and HUVEC cells, using TF3C2 Antibody. The lane on the right is blocked with the synthesized peptide.



Immunohistochemical analysis of paraffin-embedded human Small intestinal stromal tumor. 1, Tris-EDTA, pH9.0 was used for antigen retrieval. 2 Antibody was diluted at 1:200(4° overnight. 3, Secondary antibody was diluted at 1:200(room temperature, 45min).